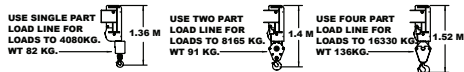
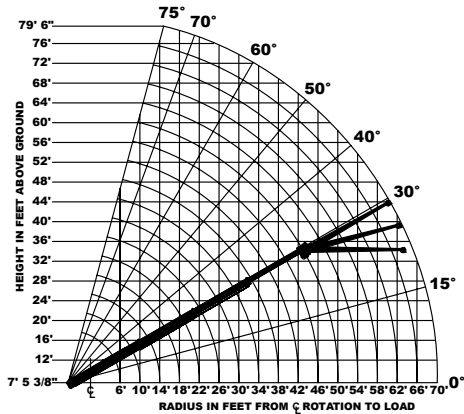
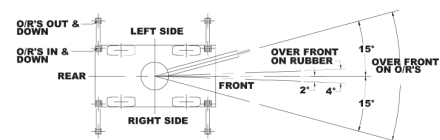


Load Chart US Standard



Load hooks, downhaul weights, hook blocks and other load handling devices except hoist rope shall be considered part of the load.



The load hoist line on this unit must be 9/16" dia. 6x36-EIP-RRL-IWRC wire rope (or equivalent) with a minimum breaking strength of 31,500 lbs..

Approved tires: OTR 385/65D22.5, 16 PLY - 120 PSI

Torque wheel nuts to 500 ft. lbs (these conditions must be maintained to handle rated loads on this crane.)

CAPACITIES ARE IN POUNDS AND APPLY TO OPERATION ON FIRM LEVEL SURFACE								
LOAD RADIUS FEET	MAIN BOOM		MAIN BOOM OR BOOM EXTENSION					
	ON RUBBER 360° ROTATION	ON RUBBER OVER FRONT	O/R'S IN & DOWN 360° ROTATION	O/R'S IN & DOWN OVER FRONT	O/R'S OUT & DOWN 360° ROTATION			
6	16400	18500	30000	36000	36000			
8	13000	15000	25000	30400	30400			
10	10800	12350	20300	25000	25000			
12	9000	10450	15500	20800	20800			
14	7550	9000	11500	18700	18700			
16	6450	7800	9000	16700	16700			
18	5600	6850	7500	14900	14900			
20	4800	6100	6400	13500	13500			
22	4150	5400	5500	12100	12100			
24	3600	4650	4800	10900	10900			
26	3100	4000	4100	9850	9850			
28	2700	3500	3500	8950	8950			
30	2350	3050	3050	8200	8200			
32	2000	2650	2650	7500	7500			
34	1750	2300	2300	7150	7000			
38	1300	1750	1750	5950	5650			
42	900	1400	1300	5000	4700			
46	600	1100	1000	4250	4000			
50	350	900	700	3650	3400			
54	---	---	---	---	3550			
58	---	---	---	---	3100			
62	---	---	---	---	2700			
66	---	---	---	---	2350			
70	---	---	---	---	2100			
BOOM EXT. OFFSET ANGLE	BOOM EXTENSION - STRAIGHT OR OFFSET							
	MAIN BOOM ANGLE							
0°	0°	15°	30°	40°	50°	60°	70°	75°
0°	2600	2750	3000	3400	4100	5100	6200	7000
15°	---	2500	2600	2700	2900	3300	4300	4800
30°	---	---	2300	2400	2500	2700	3200	3400

Deck load capacity 17,000 lbs, with empty boom retracted over front. Deck load must be centered behind front axle. Speed must be less than 2 MPH. Maximum travel 200 ft. in 30 minutes on smooth pavement.

Pick and Carry with the shortest practical boom, centered over the front. Operate with boom as low as possible with the load close to the ground. Pick and Carry capacities are for smooth, level paved surface.

The booms on this unit are all steel and have no line voltage rating - No electrical insulation value.

Boom extension deduct: 500 lbs. when stowed on base boom.

Ensure anti-two-block switch is functional after deploying or stowing boom extension.

LOAD RADIUS IS THE HORIZONTAL DISTANCE FROM THE CENTER OF ROTATION OF THE UNLOADED CRANE TO THE VERTICAL LOAD LINE WITH THE LOAD APPLIED.

EXCEEDING CAPACITY RATINGS OR APPLYING SIDE LOADS TO THE BOOM OR BOOM EXTENSION IS MISUSE, HAZARDOUS, AND VOIDS WARRANTY.

CAUTION: BOOM EXTENSION LOADS MUST NOT EXCEED MAIN BOOM CAPACITY. BOOM EXTENSION MAY ONLY CARRY LOADS WITH OUTRIGGERS DOWN.

CAPACITIES ON OUTRIGGERS ARE 85% OF TIPPING LOADS. CAPACITIES ON RUBBER ARE 75% OF TIPPING LOADS. CAPACITIES BELOW BOLD LINE ARE LIMITED BY TIPPING. OTHER CAPACITIES ARE LIMITED BY STRUCTURAL OR HYDRAULIC CAPABILITY.

MAXIMUM HYDRAULIC PRESSURE: 3000 PSI